

DRINKING FOUNTAIN PRODUCTS



DRINKING FOUNTAINS
ELECTRIC WATER COOLERS
BRITA® HYDRATION STATION™

Haws manufactures a complete line of high-quality drinking fountains. This catalog represents the most popular units in each application category. A comprehensive roster of all Haws models can be found at www.hawSCO.com.



ABOUT HAWS



GLOBAL CUSTOMERS



GLOBAL VISION



LOCAL SERVICE

For more than 105 years, Haws Corporation has been committed to bringing the highest-quality water delivery products to a wide variety of markets.

As a global manufacturer of drinking fountains, we produce a wide array of products to meet the varying needs of our customers. From our architecturally enhanced drinking fountains to our revolutionary Brita® Hydration Station™, as well as our full line of institutional and outdoor products, we are well equipped to meet the demand of our customers on many levels.

HYDRATE FOR HEALTH



Water. This liquid-life fuel is as essential to our survival as air. To feel healthy people need to consume water and stay hydrated each day. Every part of our body, from our skin to our brain, relies on ample hydration, and taking proper hydration into our daily lives can have a positive affect on physical and mental performance.

However, providing water that is healthier, cleaner and more convenient can be a challenge. The Brita® Hydration Station™ makes it easy to stay hydrated by offering convenient, great-tasting water for offices, schools, gyms and other facilities. Help increase concentration and reduce dehydration with a Brita® Hydration Station™, a touch-free, hygienic, water dispenser that allows users to enjoy the benefits of great-tasting water away-from-home.

BRITA® HYDRATION STATION™



Haws is committed to building an attitude of innovation and environmental responsibility. The new Brita® Hydration Station™ is a testament to this commitment. There are two models offered, providing even more options for great-tasting, Brita® filtered water away-from-home.

Model 2000 is a semi-recessed, wheelchair accessible, plumbed in, bottle or cup filling station. Constructed of durable ABS plastic and 16-gauge, Type 304 Stainless Steel, it has an electric sensor for touch-free, hygienic operation and has antimicrobially treated components to prevent the growth of mold and mildew.

Model 2000SM is a surface-mount bottle or cup filling station similar to the 2000, but wall mounted with an integrated drain bucket. The 2000SM is perfect for applications where cutting into a wall is not an option or where the application is temporary. This unit can be installed on virtually any indoor wall where there is a local water supply and 110V outlet nearby.

Both models of the Brita® Hydration Station™ offer superior* filtration technology. The Brita® Hydration Station™ is the only public NSF/ANSI 53 certified drinking water system on the market. NSF/ANSI 53 addresses point-of-use systems and ensures that health related contaminants are filtered out by the system. These contaminants may be present in public or private drinking water. 2,500-gallon (9,463 liter) carbon block filter reduces chlorine (taste and odor) and lead, and removes 99.99% of cysts.

Brita® Hydration Station™ Product Comparison

	2000 RECESSED	2000SM SURFACE MOUNT
Installs Directly Into Wall	✓	
Easily Installs on Virtually Any Indoor Wall Surface		✓
Saves on Costly Bottled Water	✓	✓
Plumbed Drain	✓	Optional
Filtration and Monitoring	✓	✓
30-Second Auto Shut Off	✓	✓
.5 GPM Flow Rate	✓	✓
110V Hard Wire	✓	
110V Wire and Plug		✓
Purge Feature	✓	Optional
ADA Compliant**	✓	✓
CSA/IAPMO Certified	✓	✓
Hidden Lock and Hinges	✓	✓
Heavy Duty Mounting Frame	✓	✓
Sensor Operated	✓	✓
Support & Warranty	Both products come with an extended 3-year warranty	

** The Brita® Hydration Station™ meets the Americans with Disabilities Act for wheelchair access including front and side approach, along with reach requirements when mounted at the correct height.

BRITA® HYDRATION STATION™ :: LEASING



Introducing the

\$69 per month leasing option

Whether it's for a fitness center, manufacturing facility, school or commercial office, **our leasing program makes financing a Brita® Hydration Station™ as easy as using one.**

LEASING PROGRAM FEATURES

\$69 PER MONTH The \$69 per month payment (does not include taxes or installation labor) provides 100% financing and requires no money down or initial cash outlay. Plus, most organizations can write off 100% of the lease payment for a significant pre-tax savings.

SIMPLE 60-SECOND APPLICATION We've partnered with NorEast Capital™ to make the application process as simple as possible. Our 60-second application does not require financial statements and can be securely completed online.

\$1 END-OF-LEASE BUYOUT At the end of the 5-year lease period, you have the option to purchase the unit for \$1.

AUTOMATIC REPLACEMENT FILTERS No need to order replacement filters. New Brita® Hydration Station™ filters are included in the lease program and one filter will be shipped to you, free of charge, every 6 months.

NOTE: All quoted program details are O.A.C., based on a 60-month term, do not include shipping, labor or taxes and are not guaranteed. No initial deposit required if the separate installation labor or any other cost is added to your lease payment. Please see a tax advisor for your specific tax treatment.

*NSF Certified filtration. The BRITA trademark and logo are registered trademarks of Brita, LP and are used under license by Haws Corporation®. All rights reserved.

1.888.640.4297 :: 1.775.359.4712 :: www.hawesco.com

PAGE :: 3



FEATURES & BENEFITS

- 100% lead-free waterways
- 18-gauge Type 304 Stainless Steel bowl with 14-gauge bracket
- Polished chrome-plated brass vandal-resistant bubbler and push button
- Laminar flow which produces a more even flow and eliminates splashing
- Barrier-free for full ADA access
- Front access stream adjustment, cartridge and strainer
- Swirl bowl design channels water to ensure proper drainage
- Vandal resistant components and bottom plates
- Pre-built and fully water tested for your convenience and quick installation



Model 1011HP5

A "Hi-Lo," barrier-free stainless steel fountain with round sculpted bowls. Optional cane skirt also available, as shown.

WALL MOUNTED :: ARCHITECTURAL



Model 100IMS

Barrier-free, satin finish stainless steel drinking fountain with sculpted bowl, back panel and in-the-wall mounting system, and 100% lead-free waterways



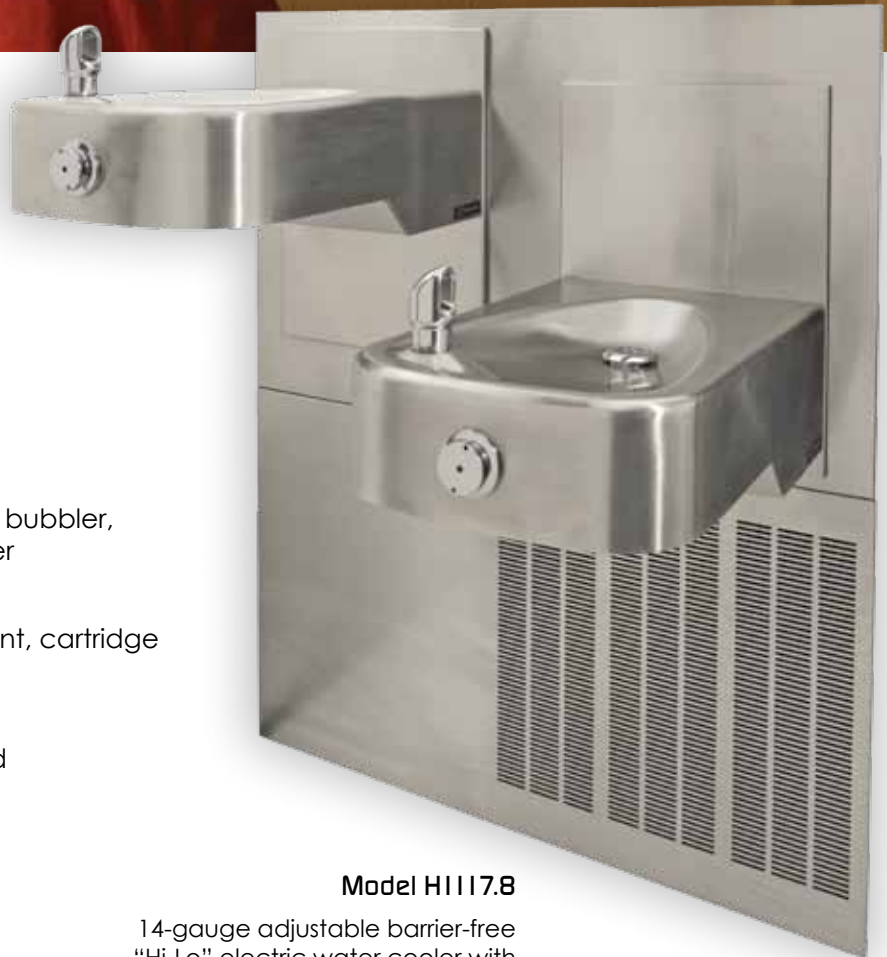
Model H1001.8HPS

Provides 8 gph (30.28 lph) chilled water, high polished stainless steel.



Model H1011.8HO

Hands off "Hi-Lo" electric water cooler provides 8 gph (30.28 lph) chilled water, satin stainless steel.



FEATURES & BENEFITS

- 100% lead-free waterways
- Polished chrome-plated brass bubbler, push button and waste strainer
- Barrier-free
- Front access stream adjustment, cartridge and strainer
- Vandal resistant components
- Pre-built and fully water tested
- Integral waste trap

Model H1117.8

14-gauge adjustable barrier-free "Hi-Lo" electric water cooler with adult and child ADA capabilities.

WALL MOUNTED :: INSTITUTIONAL



Model 1025G

Outdoor wall-mounted, barrier-free drinking fountain with single-bubbler and push-button stainless steel valve assembly. 11-gauge fabricated-steel with galvanized finish.



Model 1431

Two-bubbler, enameled iron, barrier-free fountain provides a bullet proof durability. Bubbler heads locked to main bowl prevent against vandals and provide efficient water flow for twice the users as single bubbler fountains.



Model 1109.14BP

Heavy-duty, barrier-free, 14 gauge Type 304 Stainless Steel construction and specialized integral mounting plate offer even more protection with a sturdier design. Satin finish resists stains and corrosion.

Model H1119.8

"Hi-Lo" electric water cooler provides 8 gph (30.28 lph) chilled water, stainless steel skin. Features vandal-resistant bubbler heads, waste strainers and bottom plates. Grille slots are designed to eliminate sharp edges and are backed with a foam filter to protect the fan motor and high displacement compressor from debris.





FEATURES & BENEFITS

- 100% lead-free waterways
- Polished chrome-plated brass bubbler, push button and waste strainer
- Barrier-free
- Front access stream adjustment, cartridge and strainer
- Vandal resistant components and bottom plates
- Integral waste trap
- Pre-built and fully water tested

Model 1047

Wall-mounted design with child ADA capabilities. Concrete with exposed aggregate finish and galvanized wire to reinforce the vibra-cast. Hood extension protects the bubbler head with a partial enclosure, for a greater protected drinking point.

WALL MOUNTED :: OUTDOOR



Model 1025

Barrier-free, heavy-duty 11-gauge fabricated galvanized steel, with green powder-coated finish. Top-down drain access allows for cleaning without taking unit apart. Welded heavy-duty bubbler guard protects the drinking point from misuse.

AVAILABLE IN CUSTOM COLORS

Model 1501

Barrier-free "Hi-Lo," wall-mounted design with white enameled iron construction. Soft rounded corners prevent mishaps and other accidents that may occur once installed. Matching back panel provides a better base for a sturdier fountain.



Model 1409

Multi-bubbler, barrier-free white powder-coated cast aluminum construction. Gloss finish resists stains keeping the fountain protected. Three bubbler heads locked to main bowl prevent against vandals and provide efficient water flow in high traffic areas.





FEATURES & BENEFITS

- Barrier-free
- Front access stream adjustment, cartridge and strainer
- Vandal resistant components
- Chrome-plated brass bubbler, push button and waste strainer
- Esthetically pleasing and protective powder-coated surfaces
- Heavy-duty steel construction
- Freeze-resistant options



Model 3500D

Heavy-duty, 12-gauge stainless steel construction. "Hi-Lo" barrier-free design provides for twice the users as regular drinking fountains. Ground level dog fountain allows for pet owners to easily supply their animal with a cool flowing stream of water. Green powder-coat paint finish is standard with nine other powder-coat colors available at an additional cost.

PEDESTAL



Model 3380

Heavy-duty, 11-gauge fabricated galvanized steel with powder-coated finish provides exceptional corrosion resistance in one of our toughest made fountains. The standard color is green; other colors available at additional cost.



Model 3511

"Antique style" pedestal made of heavy-duty, cast aluminum with powder-coated finish makes for one of the most stylish fountains that Haws produces. The standard color is black; other colors available at additional cost.



Model 3300

"Hi-Lo" barrier-free design. Ready for any environment with heavy-duty, 11-gauge construction, bubbler guards and recesses push buttons.

AVAILABLE IN CUSTOM COLORS



Model 3202

Angled barrier-free, trough-style design allows the pedestal to be placed securely in multiple locations where a gravel fill is present or can be installed. Gravel fill and trough design completely eliminate the need for traditional drains that can be clogged with sand and other contaminants.

AVAILABLE IN CUSTOM COLORS

Custom Color Selections



BRONZE MIST

GREEN

YELLOW

RED

BLUE

SILVER

EBONY

WHITE

COFFEE

TANGERINE



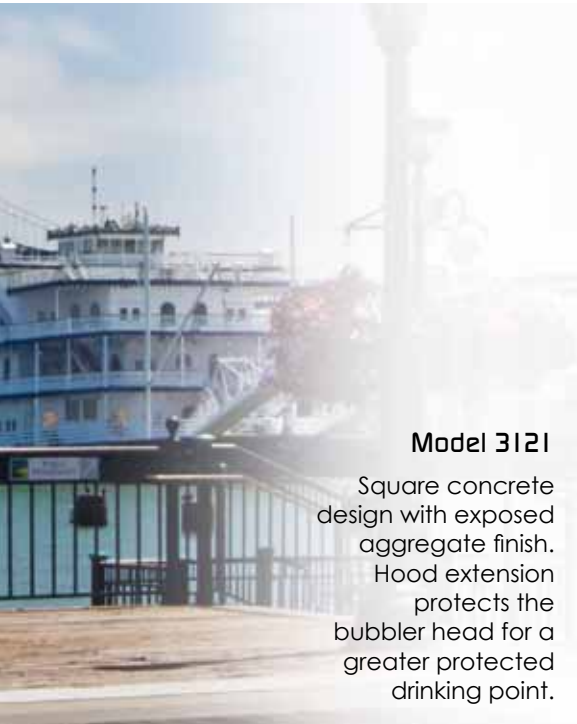
FEATURES & BENEFITS

- Heavy-duty, vibra-cast concrete construction with wire reinforcement and exposed aggregate finish
- Front access stream adjustment, cartridge and strainer
- Vandal resistant components including recessed push buttons
- Polished chrome-plated brass bubbler, push button and waste strainer
- Oversize access panels for ease of maintenance
- Attractive high-polished stainless steel basins
- Top-down access to the drain allows the fountain to be cleaned without taking the unit apart
- Freeze-resistant options

Model 3150

Adjustable design allows the arm to be mounted at adult or child height as required by ADA. Hood extension protects the bubbler head with a partial enclosure, for a greater protected drinking point.

CONCRETE PEDESTAL



Model 3121

Square concrete design with exposed aggregate finish. Hood extension protects the bubbler head for a greater protected drinking point.



Model 3177

Angled barrier-free design with hood extension that protects the bubbler head with a partial enclosure, for a greater protected drinking point.



Model 6519FR

Freeze-Guard™ freeze-resistant valve system is designed to work with high water table areas. A quick disconnect allows the valve to be lifted to the surface independently of the fountain providing ease of maintenance.

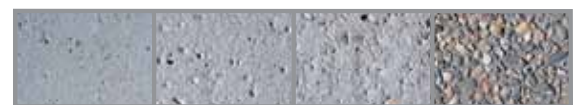


Model 6620

Square concrete step that matches the color and finish of Haws' concrete drinking fountains to allow children access to the drinking water stream. It is a vibra-cast reinforced square concrete step 10" high for surface mounting. Anchor bolts supplied.



Four Concrete Finishes

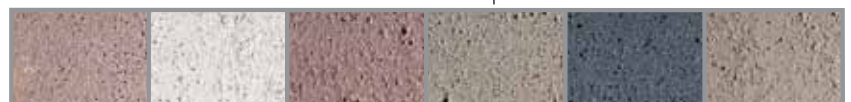


LIGHT SANDBLAST MEDIUM SANDBLAST HEAVY SANDBLAST EXPOSED AGGREGATE

Easy to Order

- Go to www.hawesco.com
- Choose the model
- Select one of the four concrete finishes
- Select the concrete color

Sample of Concrete Colors



DESERT SAND C-11 WHITE 01 CORAL RED C-22 MESA BEIGE C-12 DARK GRAY C-34 SOMBERO BUFF C-25

To view all concrete color options, go to www.hawesco.com



Model 4110ADA

Barrier-free capabilities when mounted at appropriate height. Sunken down sink design with water tight fit and stainless steel mounting rim (not shown) helps to minimize excess splashing. Heavy-duty, cast iron basin with a glossy white acid-resisting enamel finish. Pre-punched to accept two valves and/or faucets. Model shown with optional components.

DECK MOUNTED / SINKS



Model 4010

Deck mounted for countertop locations. Push button operated with adjustable stream regulation. Equipped with mounting bracket and waste strainer. Stainless steel bowl and bubbler. Anti-squirt flow prevents surging water, keeping the drinking area contained and clean.



Model 4230

Barrier-free, stainless steel, deck-mounted sink, 31" x 19" x 5" (787 mm x 482 mm x 127 mm) deep. Sunken down sink design helps to minimize excess splashing and self-rimming feature allows for easy mounting, while the stainless steel construction offers a good amount of durability and corrosion resistance. The satin finish resists stains and corrosion. Water-tight fittings along with sound deadening underneath keep this unit mounted securely on any countertop. Model shown with optional components.



Model 5054LF

Shielded bubbler and self-closing lever handle valve with pressure regulating flow control to provide an anti-squirt drinking stream. Unit is to be mounted from a sink or counter top and is constructed from lead-free polished chrome-plated brass, making it resistant to corrosive materials.



Model 5452LF

Gooseneck faucet is designed with a .5 gpm (.189 lpm) flow control and self-closing lever handle action. Unit is to be mounted from sink or counter top and is constructed from lead-free polished chrome-plated brass, making this faucet resistant to corrosive materials.

DRINKING FOUNTAIN MODELS

OPTIONAL ACCESSORIES																								
	1001	1001BP	1011MS	1025	1047	1109.14	1117L	1409	1431	1501	2000	3121	3150	3177	3202	3300	3380	3500D	3511	6519FR	6620	H1011.8HPS	H1119.8	
6250LF															●	●			●					
6424											●													
6426	●	●	●	●	●	●	●	●	●	●		●	●	●	●	●		●	●		●	●		
6603	●	●																						
6611											●	●	●		●	●	●	●						
6620											●	●												
6635																	●	●						
6700	●	●		●	●																			
6715										●														
6800	●	●		●	●	●	●			●														
BP6	●	●																						
HCR8	●	●	●	●	●	●	●	●	●	●	●										●	●		
MTG.3501																		●						
MTGFR.DF2			●																					
MTGFR.LG																					●	●		
SK1																						●		
SK3		●																						
Concrete Colors				●							●	●	●											
Inlaid Tile				●							●	●												
Custom Colors														●	●	●	●	●						

COLOR CODES

- Orange indicates a **REQUIRED** Accessory
- Gray indicates an **OPTIONAL** Accessory

ACCESSORIES



Model 5551

Push lever operated, self-closing, polished chrome-plated brass, deck-mounted, gooseneck cold water glassfiller faucet.



Model 6250LF

Self-closing, plain end, lead-free, brass bib faucet with polished chrome-plated finish.



Model 6252EHLF

Self-closing, plain end, bib faucet with rough brass finish and a special extended lever handle which is locked to valve.



Model 6424

Replacement filter for the Brita® Hydration Station™ sensor operated bottle or cup filling station.



Model MTG.3501

Galvanized steel anchors.



Model MTGFR.DF2

In-wall mounting frame provides maximum support and facilitates the installation of 1011MS and 1011HPSMS series fountains.



Model 6426

Filter, 12" x 2" (304 mm x 50 mm), in-line lead removal element that reduces lead from incoming water supply.



Model 6603

Satin finish stainless steel access panel. Includes frame and screws.



Model 6611

Sand trap for installing adjacent to pedestal drinking fountains to help prevent debris and contaminants from clogging waste line.



Model 6620

Matching square concrete step for square concrete pedestals, 10" (254 mm) high.



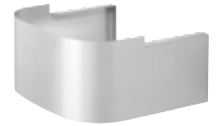
Model 6635

In-pedestal sand trap for models 3500 and 3511.



Model MTGFR.LG

In-wall mounting frame provides the maximum support and facilitates the installation of "Hi-Lo", electric water coolers.



Model SK1

Satin finish stainless steel cane touch skirt for installation on high unit to comply with ADA protruding objects guidelines.



Model 6700

Universal mounting plate for most single bubbler wall mounted fountains.



Model 6715

In-wall mounting plate provides the maximum support and facilitates the installation of "Hi-Lo", barrier-free, 1501 series fountains.



Model 6800

Universal in-wall mounting support for use with most fountains.



Model BP6

Back panel that increases location visibility of fountain and helps protect wall from inadvertent splash. Model BP6 is 15" x 9" (381 mm x 482 mm) stainless steel with a satin finish. Used on model 1001.



Model HCR8

Chiller provides for instantaneous cooling to meet a continuous demand for chilled water.



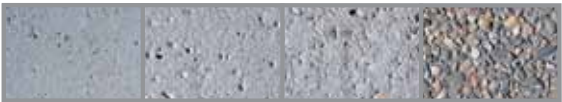
Model SK3

Satin finish stainless steel cane touch skirt for installation on high unit to comply with ADA protruding objects guidelines.

COLORS :: FINISHES

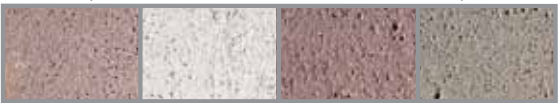
CONCRETE

Four Concrete Finishes

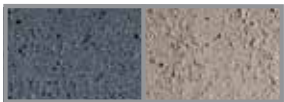


LIGHT
SANDBLAST MEDIUM
SANDBLAST HEAVY
SANDBLAST EXPOSED
AGGREGATE

Sample of Concrete Color Options



DESERT SAND
C-11 WHITE
01 CORAL RED
C-22 MESA BEIGE
C-12



DARK GRAY
C-34 SOMBERO
BUFF
C-25

Inlaid Tile



POWDER-COATED STEEL

Custom Color Selections



SILVER EBONY WHITE COFFEE TANGERINE



BRONZE MIST GREEN YELLOW RED BLUE

SINK MODELS

OPTIONAL ACCESSORIES

	4010	4110ADA	4210	4230
5010.6427SS	●	●	●	
5017LF	●	●	●	
5051LF	●	●	●	
5054LF	●	●	●	
5452LF	●	●	●	
5510LF	●	●	●	
5530LF	●	●	●	
6426	●			
6455				
HCR8	●			

COLOR CODES

- Orange indicates a **REQUIRED** Accessory
- Gray indicates an **OPTIONAL** Accessory



Model
5010.6427SS
A polished stainless steel push-button bubbler valve for countertop or sink mounting.



Model **5017LF**
All polished chrome-plated sink or counter mounted drinking faucet with renewable control cartridge.



Model **5051LF**
Polished chrome-plated lever handle deck or sink-mounted bubbler valve.



Model **5054LF**
Self-closing lever handle, polished chrome-plated brass deck-mounted drinking faucet with automatic stream regulation.



Model **5452LF**
Self-closing lever handle, polished chrome-plated brass gooseneck faucet.



Model **5510LF**
Stay-open lever handle, polished chrome-plated brass gooseneck faucet.



Model **5530LF**
Stay-open hot-and-cold lever handled chrome-plated brass gooseneck faucet.



Model **6426**
Filter, 12" x 2" (304 mm x 50 mm), in-line lead removal element that reduces lead from incoming water supply.

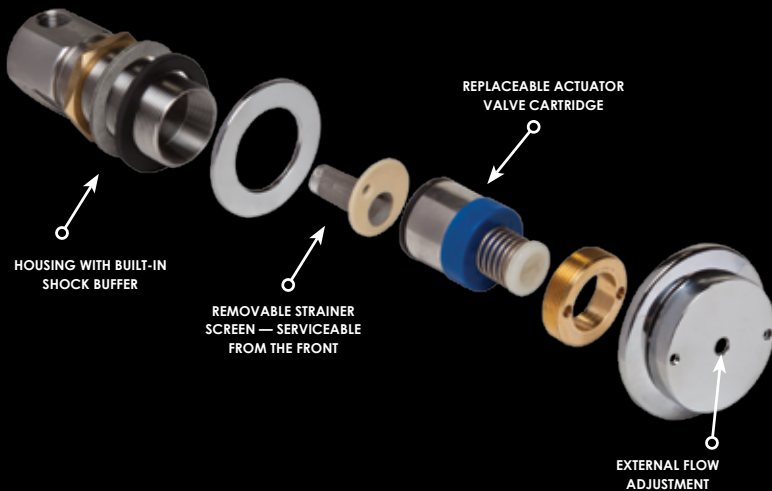


Model **6455**
Polished chrome-plated brass flat waste strainer.



Model **HCR8**
Chiller provides for instantaneous cooling to meet a continuous demand for chilled water.

5874 :: PUSH BUTTON ACTUATION VALVE



All components meet NSF61

The stainless steel, push-button activation valve is designed with an integral buffer mechanism in its housing that cushions the effects of sudden pressure changes. It not only eliminates "Water Hammer," but it also eliminates the need for separate in-line buffers that can leak or crack.

It also features a sediment screen built right into the valve housing, behind the actuation cartridge and button. Removal of the actuator cartridge and screen from the front of the installed fountain for cleanout or cartridge replacement takes only minutes and uses minimal tools as no access panel needs to be removed!

The actuation valve is entirely lead-free and ideal for any drinking fountain application. It is standard equipment on all non-freeze-resistant Haws drinking fountains and it can be retrofitted into existing non freeze-resistant drinking fountains.

AB1953

AB1953 is encompassed in the California Assembly Bill 1953, enacted in September of 2006, which calls for a reduction in lead content in all plumbing equipment including pipes, fittings, and fixtures to a level less than 0.25%. This law went into effect on the first day of January 2010 and all the aforementioned products sold and installed on and after that date must meet this AB1953 lead reduction requirement. **In 1990, Haws was already manufacturing products that fall within the lead reduction requirement that is now in effect.**

CERTIFICATIONS

The CSA, UPC and UL certification marks signify that the product meets applicable U.S. and Canadian standards, including those from CSA, ANSI, ASME, ASSE, ASTM, NSF and UL.

Below is a list of certifications that Haws' drinking fountain models and optional accessories have been tested and certified to use. Certifications for each model can be found in the model descriptions at www.hawesco.com.

CSA: Canadian Standard Association International



ASSE 1071
LLC
NSF/ANSI 61



ASSE 1071



CERTIFIED
to ANSI Z358.1



Drinking Water
NSF/ANSI 42 & 53/CSA B483.1

IAPMO: International Association of Plumbing and Mechanical Officials



NSF/ANSI 61
LOW-LEAD



NSF/ANSI 61
LOW-LEAD

UL: Underwriters Laboratories



ASSE: American Society of Sanitary Engineering

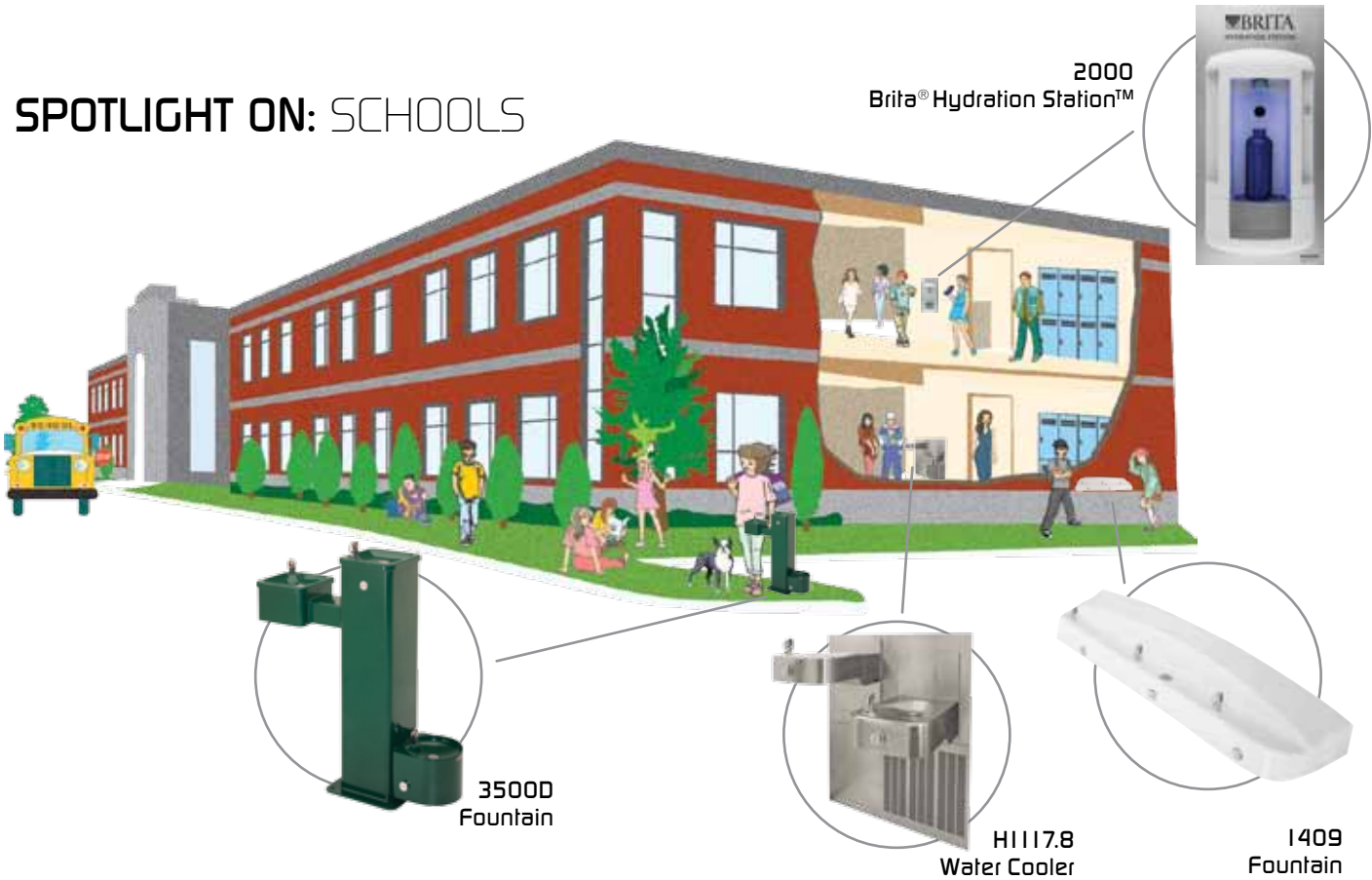


Water Quality Association: NSF/ANSI 61, ANNEX G, AB 1953

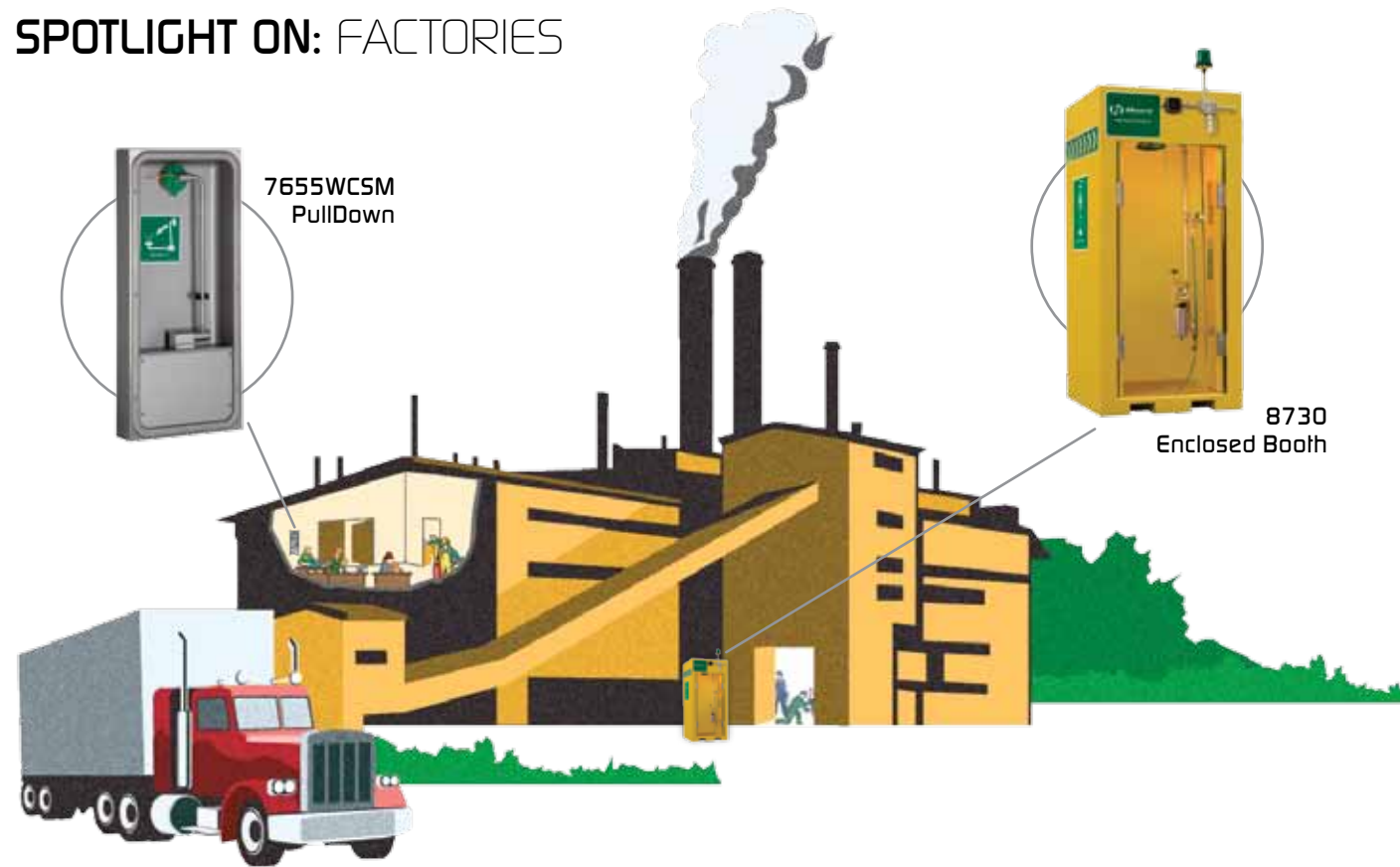


Wheel Chair Accessible products

SPOTLIGHT ON: SCHOOLS



SPOTLIGHT ON: FACTORIES



EMERGENCY PRODUCT SPOTLIGHTS



Model 7620

The AXION™ eyePOD™ is a faucet-mounted, thermally-controlled eyewash that provides homeowners and professional businesses, such as doctor and dentist offices, laboratories, and educational facilities, with AXION MSR™ eyewash capabilities in an attractive, low profile, low cost design. With a single motion, your standard faucet becomes an AXION™ *Medically Superior Response™* eyewash, and with another rotation it resets as a faucet.



Model TWBS.SHE

Lead-free Emergency Valve thermostatically mixes hot and cold water to provide a safe fluid supply for emergency shower and eyewash equipment, with a flow rate of 74 gpm (280 lpm). The valve contains a secondary high-temperature limit valve to provide additional protection to the user in the event of main tempering valve malfunction. Additionally, to ensure a fail-safe water supply for emergency shower and eyewash stations, a series of cold water by-pass valves open in the event of hot water pressure loss. Model has a 3-year warranty.



Model 7655WCSM

Surface-mounted pull-down eye/face wash with AXION MSR™ eye/face wash head, in a stainless steel cabinet is perfect for mounting on block or solid walls which cannot be cut into. Made of 18-Gauge Type 304 Stainless Steel, the recessed cabinet is a deep-drawn heavy-duty structure with smudge resistant bead blast finish. The eye/face wash head is easily activated by the emergency equipment's pull-down design and has an easy access exterior mounted in-line strainer.

Model 8730

A completely enclosed shower and eye/face wash booth designed to protect in case of an emergency in the most adverse of conditions. The all-weather foam insulated booth with an internally-mounted space heater provides an environment that is safe and comfortable for the user. The ultimate in safety is present with a 20 gpm (75 lpm) shower, an AXION MSR™ showerhead, AXION™ eye/face wash head, and 3 gpm (11 lpm) from the side-hanging drench hose. During an emergency, a flow-switch activated alarm is sounded and a flashing warning light is triggered. Large graphics and universal signs make everyone present aware that the booth is ready for emergencies. Combination shower and eye/face wash is certified by CSA to meet the ANSI Z358.1 Standard for Emergency Eyewash and Shower Equipment.



Go Ahead, Stay Hydrated!SM

US/Canada

Haws HQ • www.hawesco.com • 1.888.640.4297

Mexico/Central America

Haws HQ • www.hawesco.com • +1.775.359.4712

South America

Avlis-Haws Brazil • www.avlisvalvulas.com.br • +55 (11) 4024.2977

Asia Pacific

Haws Singapore • www.haws.sg • +65.6367.0359

Europe/Middle East/Africa

Haws Switzerland • www.haws.ch • +41 (0) 34.420.6000

